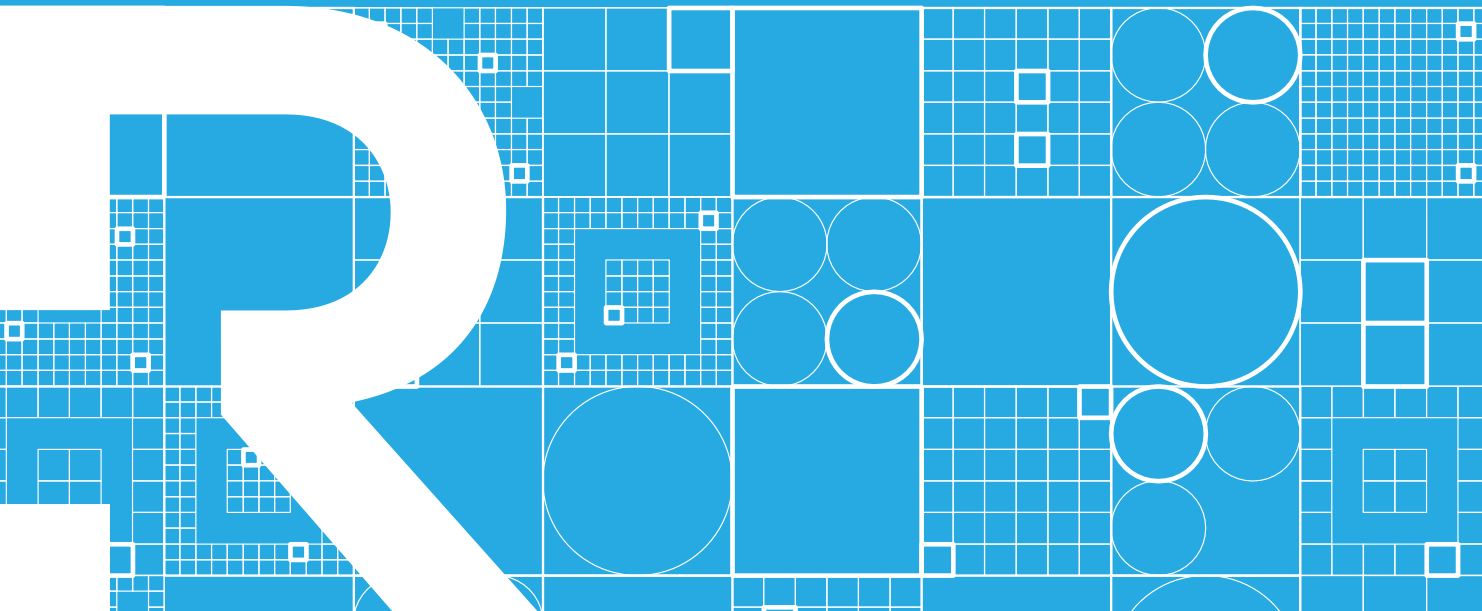


Interoperability in the NHS

DATE 25.11.2022



Welcome Your Presenters



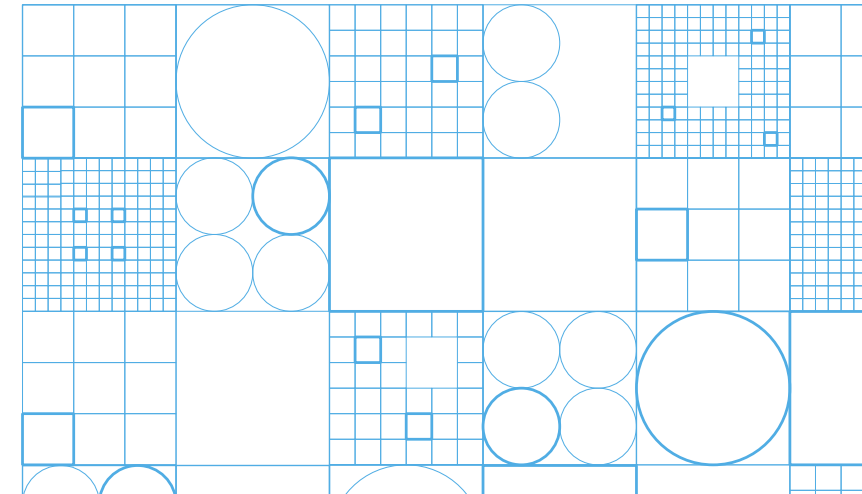
Nik Barnes

Consultant Radiologist,
former CCIO of Alder Hey
Children's Hospital



Stuart MacLellan

CIO, South London
and Maudsley
NHS Trust



Key Take Aways



Understand the main interoperability challenges being faced by ICS's today



Why is interoperability important to ICS's right now?



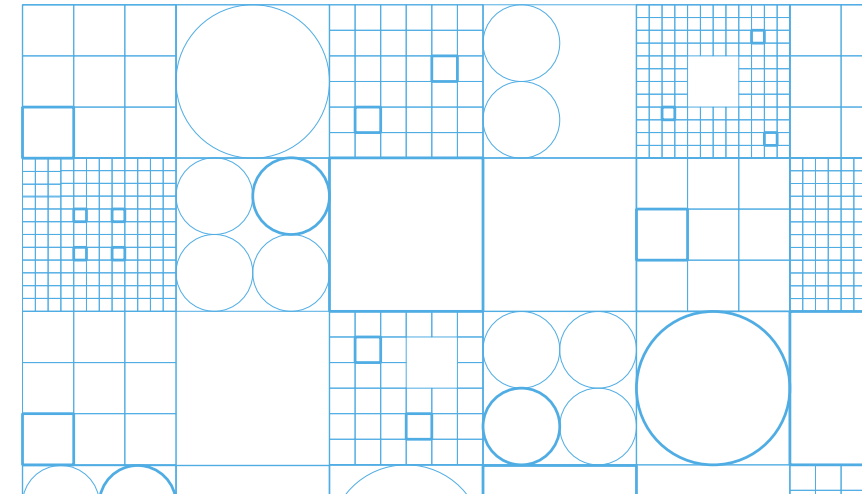
What does Open Technology mean?



Understand how interoperability at South London and Maudsley (SLaM) benefits their organisation and delivers a World 1st Point of Care Process.



How to deliver an interoperability strategy
– Plan, Platform and Partner



Dr Nik Barnes

MBBS, MRCP (Paediatrics), DMRD, FRCR

Consultant Paediatric Radiologist

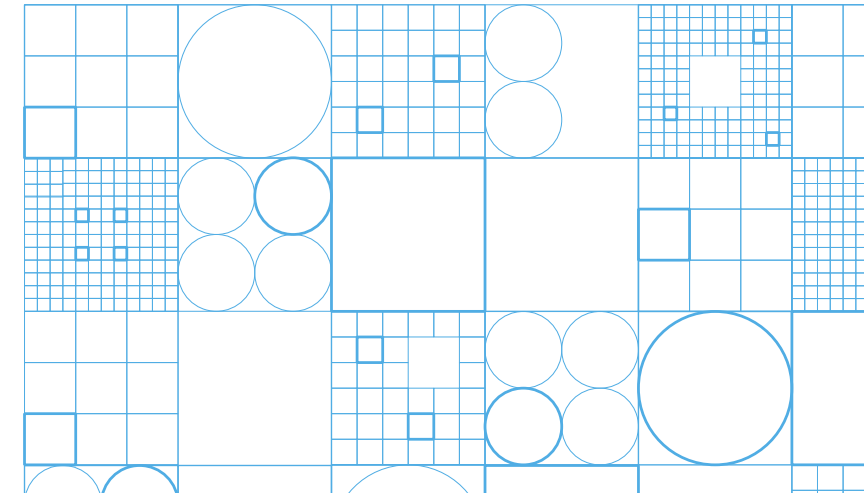
Clinical lead for IT and then CCIO for over 10 years
at Alder Hey Children's NHS FT

- **NPfIT and PACS** – C&M Global PACS
- Implementing a **paper light system** at Alder Hey
- **New EPR** – Process redesign, digital documentation, training, trouble shooting and safety lead
- **Clinical Lead for successful GDE bid** -Creator of 3 of 6 GDE programmes Alder Play, "Other ologies", Speciality Packages

Current roles

- **Radiology Lead for IT** – process and report design
- **PACS/RIS systems**
- **Independent Clinical IT Consultant**
 - Restart
 - C&M ICS

Teamwork

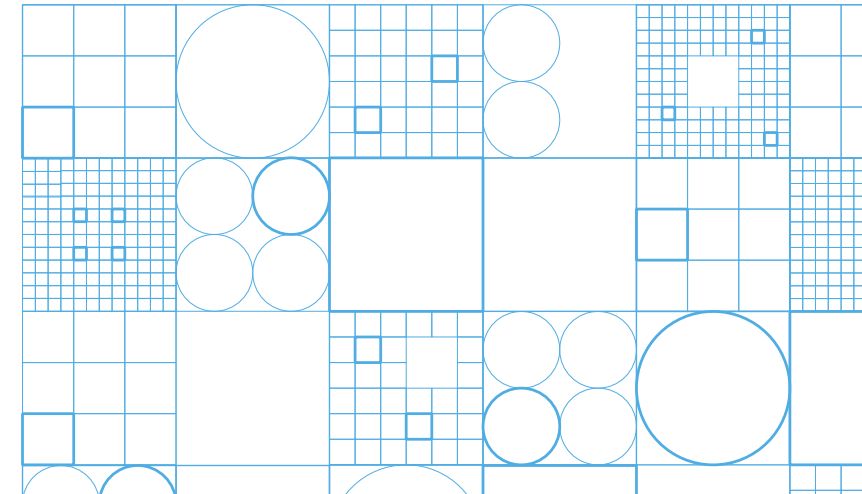


What is Interoperability?

Digital Component – Focus for today

“Interoperability is the USEFUL, RELIABLE exchange of data between health systems to support patient care”

- ✓ Easier said than done
- ✓ VITAL foundation linking systems to enable process redesign



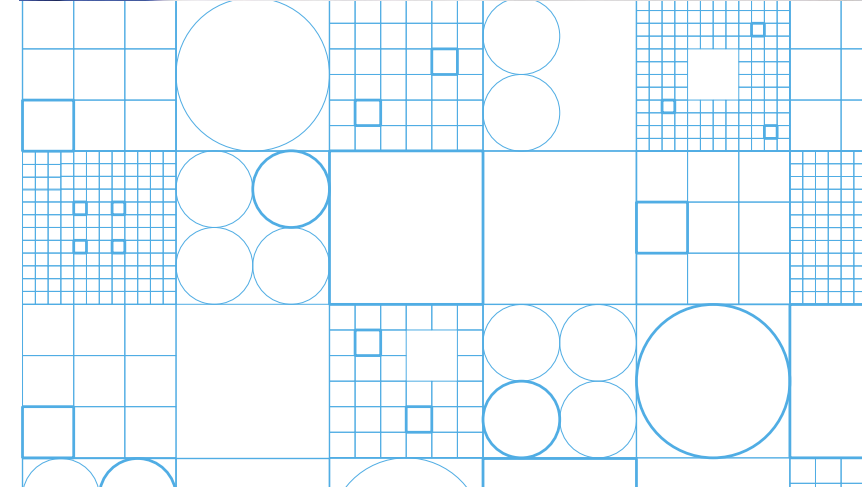
What are the main challenges?

Interoperability is a Key Issue in Healthcare



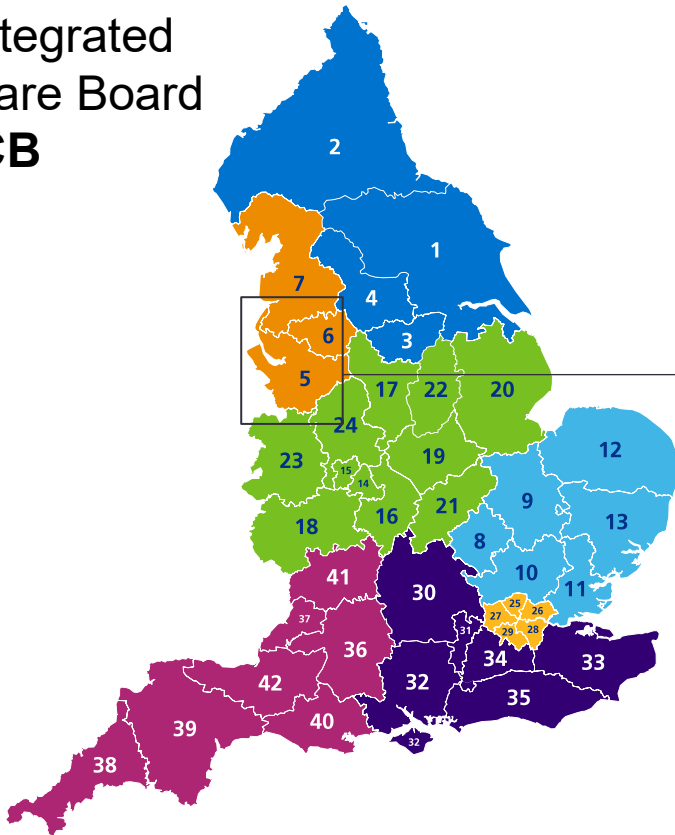
Challenges

- Digital Maturity
- Consolidation of Systems
- Intra and inter ICS working
- Virtual Wards
- Diagnostic alliance hubs



Why does Interoperability matter in an Integrated Care System (ICS)?

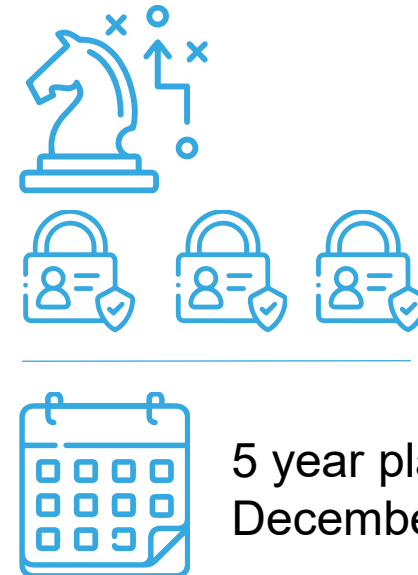
Integrated
Care Board
ICB



Integrated
Care Partnership
ICP

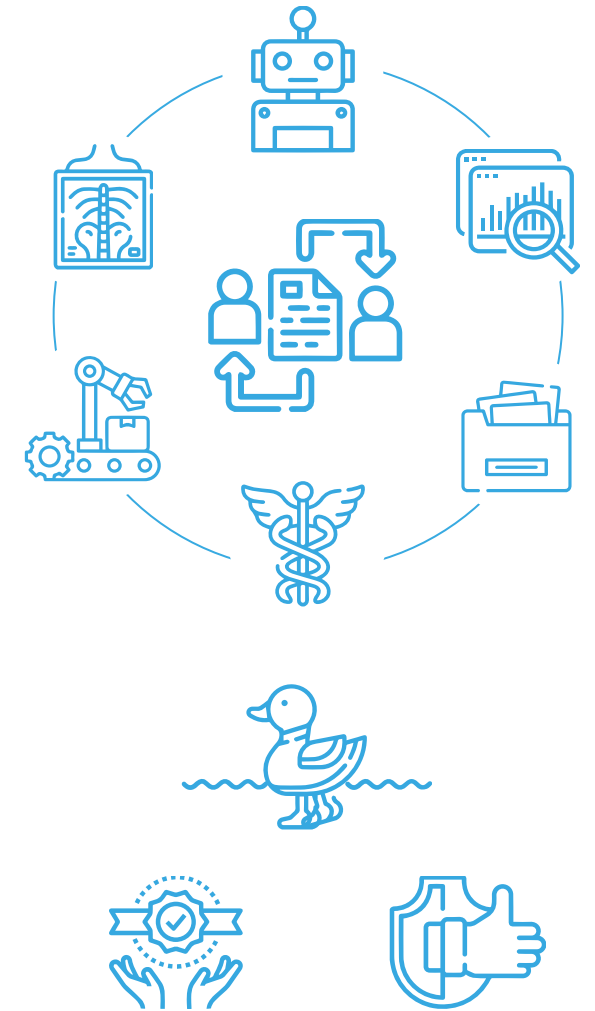
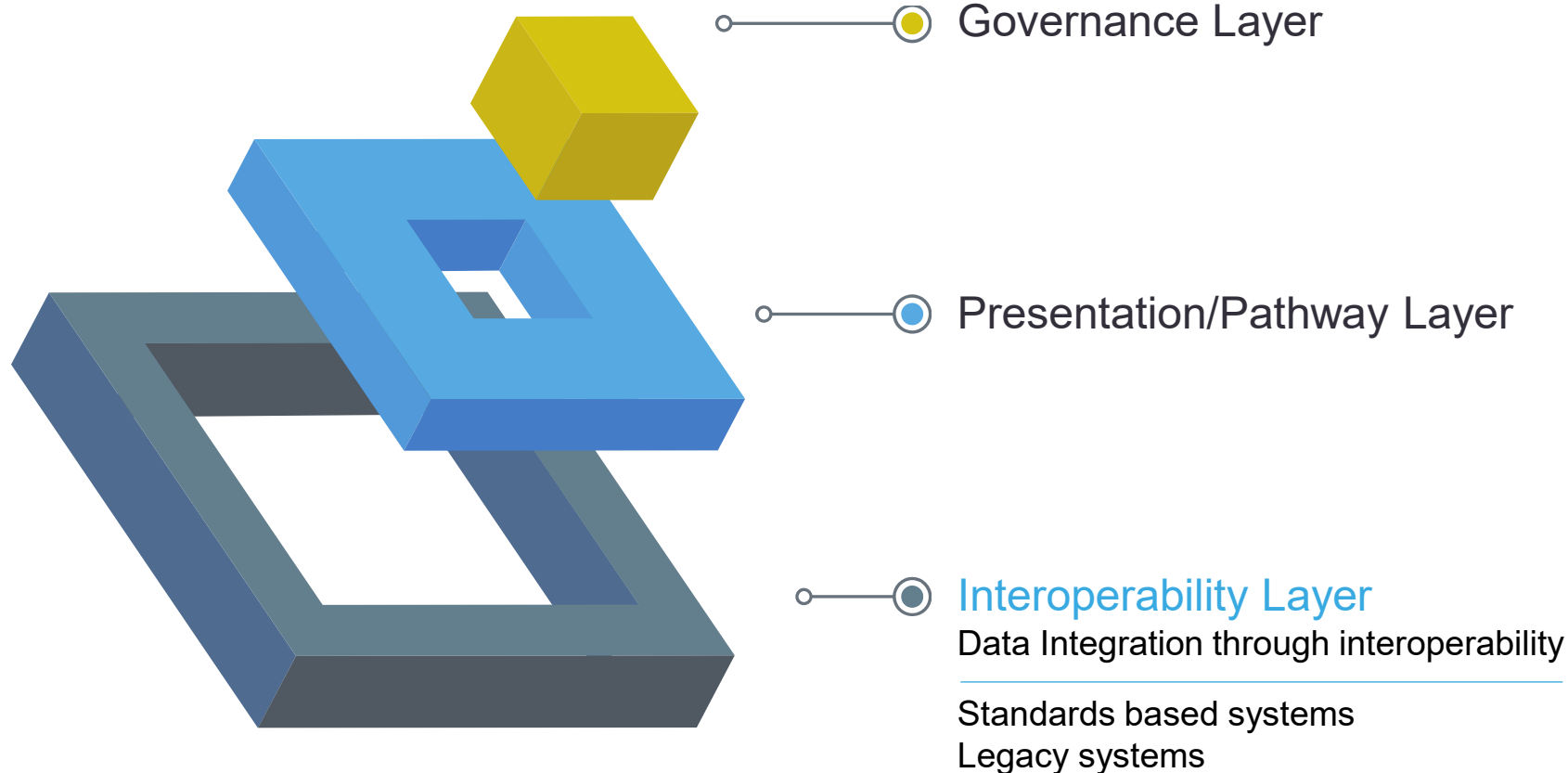


Integrated
Care Strategy

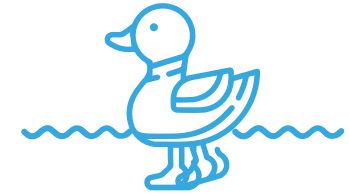
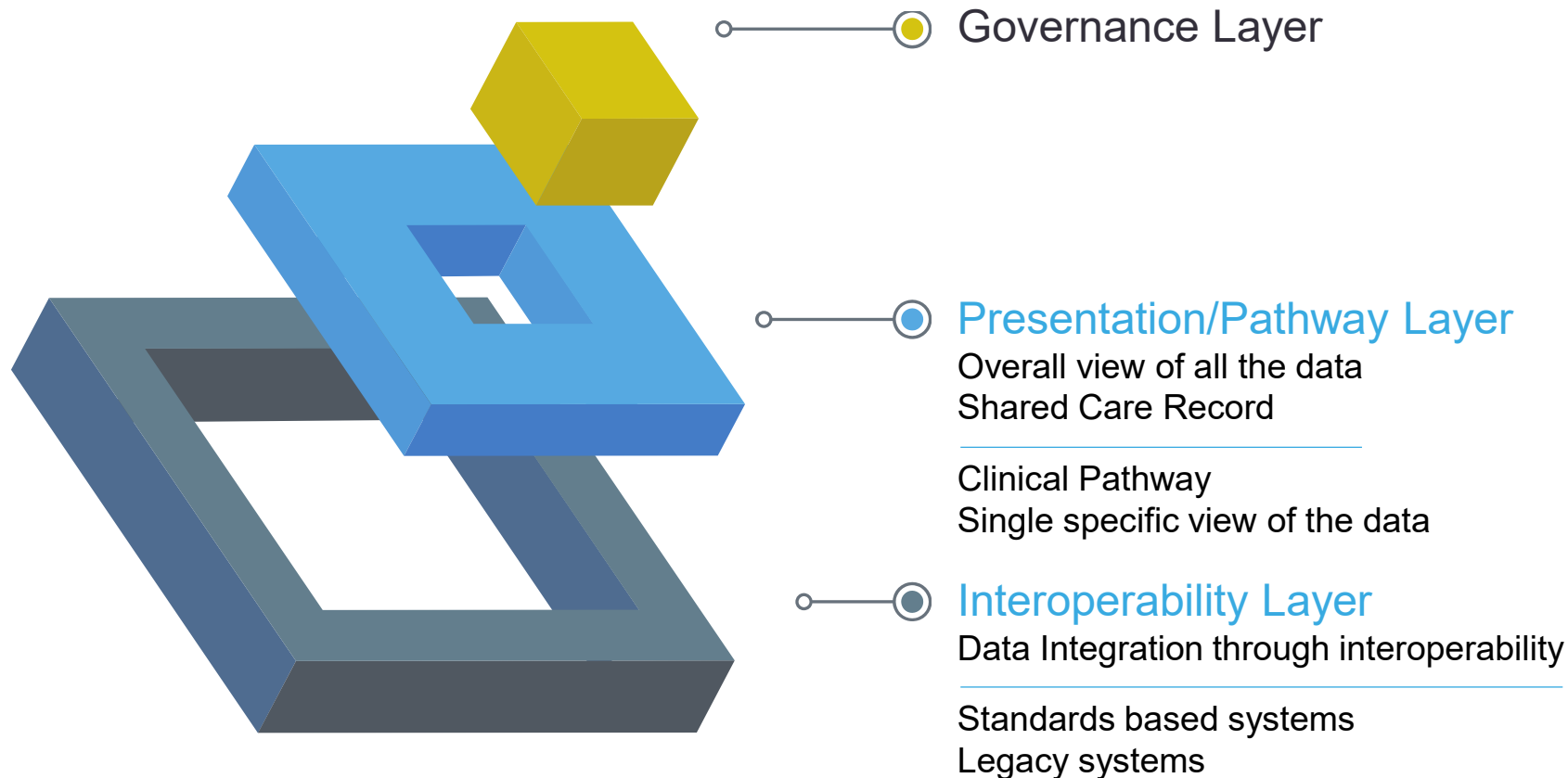


5 year plan by
December 2022

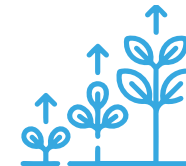
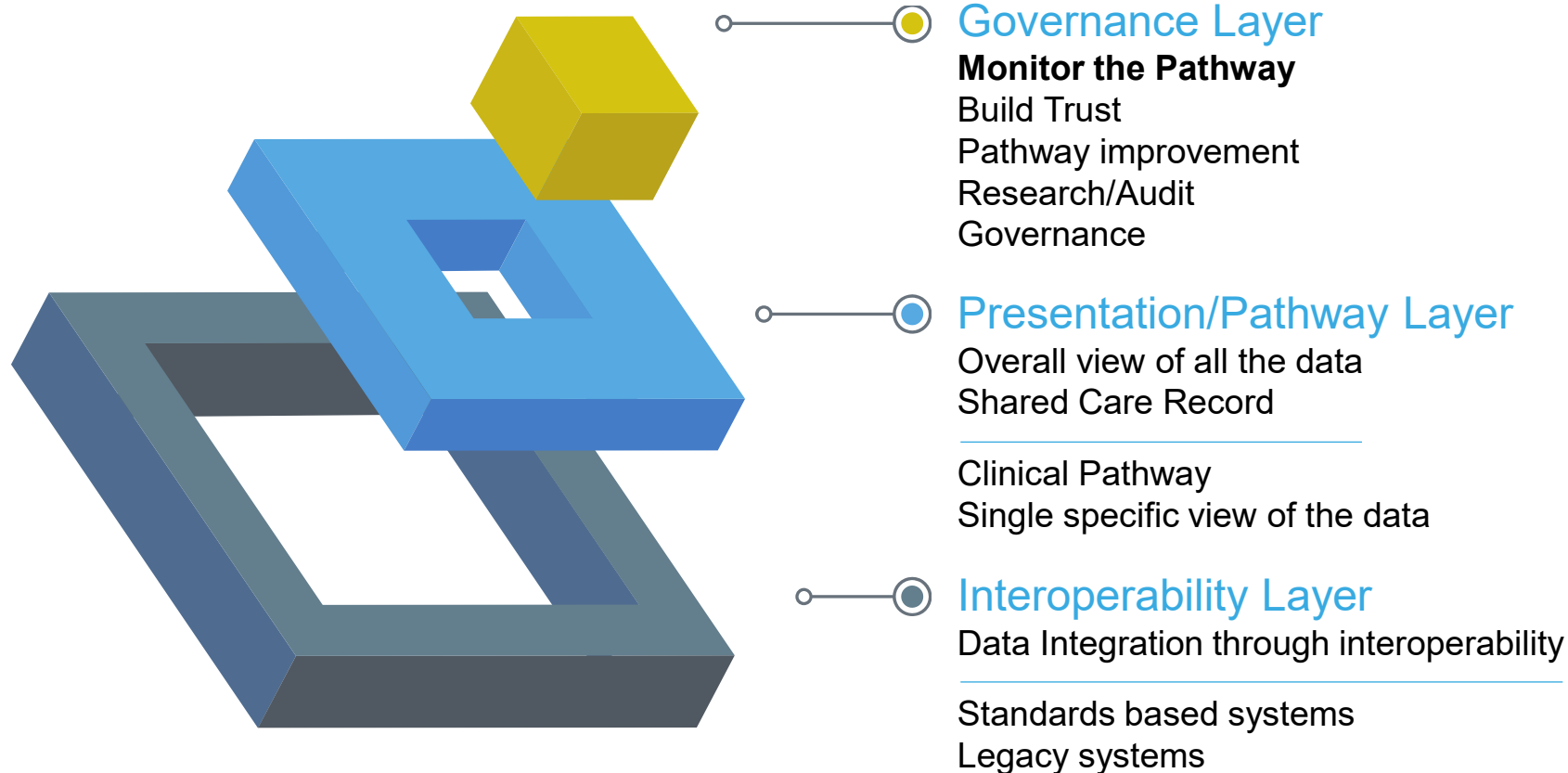
Digital Data in Clinical Pathways – how might it work?



Digital Data in Clinical Pathways – how might it work?



Digital Data in Clinical Pathways – how might it work?



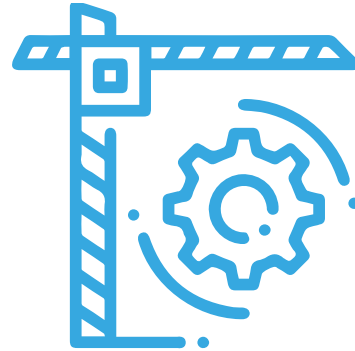
Starter for 10...



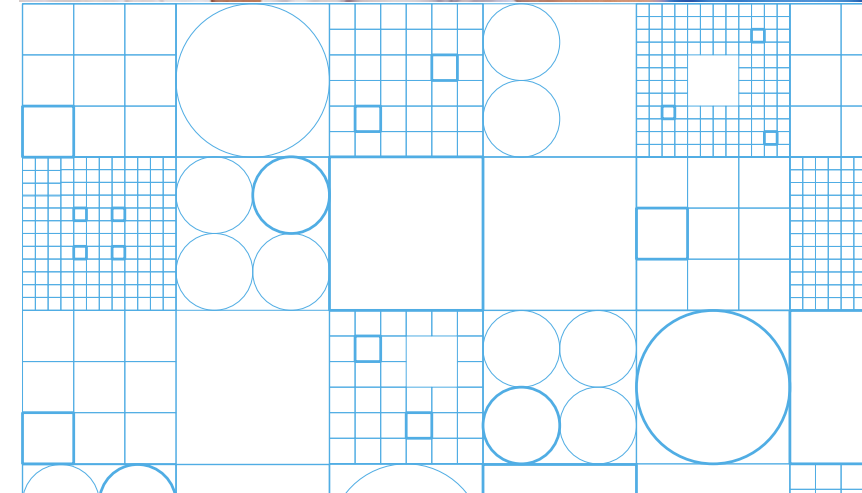
Start with
the basics



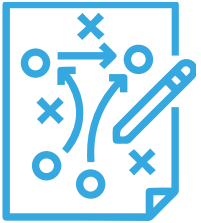
Open
Technology



Building in the
Monitoring



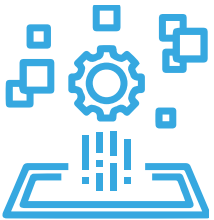
Plan, Platform, Partner



Plan:

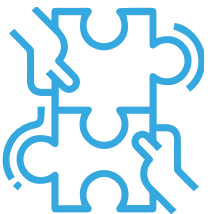
Consider both layers:

- High level
- Data level



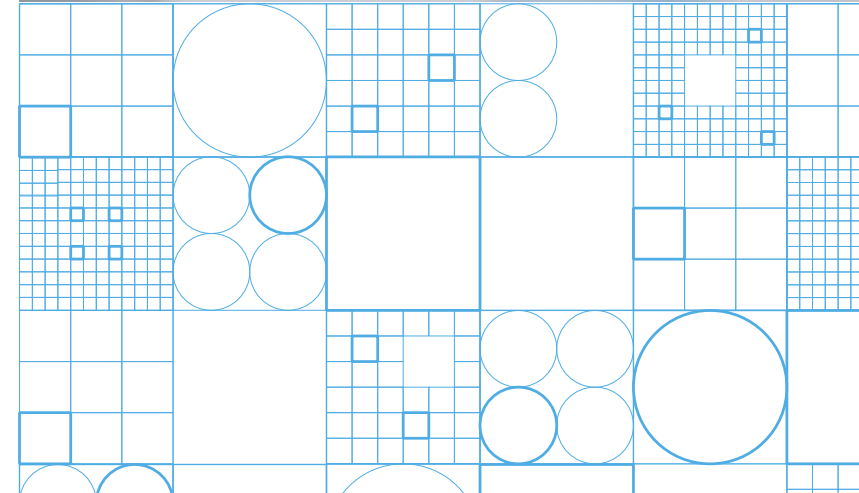
Platform:

- Unify disparate systems in one manageable way.
- What is the solution for interoperability?
- Who is going to monitor and maintain the system?



Partner:

- Help create your interoperability strategy – this is tough!
Time scales!
- Implement the solution
- Monitor the platform
- Provide a presentation layer?

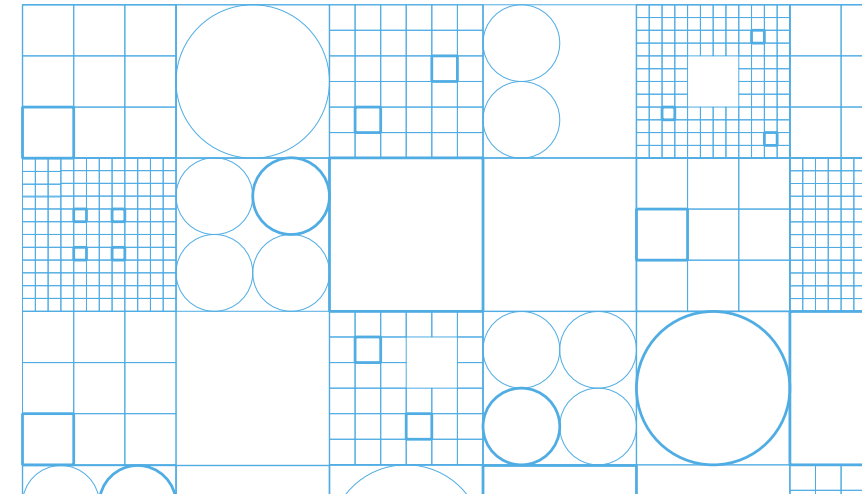


Stuart MacLellan – South London and Maudsley (SLaM)

CIO of South London and Maudsley NHS Trust Digital Leader working at SLaM for the past 7 years.

Passionate about Technology, The Cloud and Data, and its ability to make healthcare better!

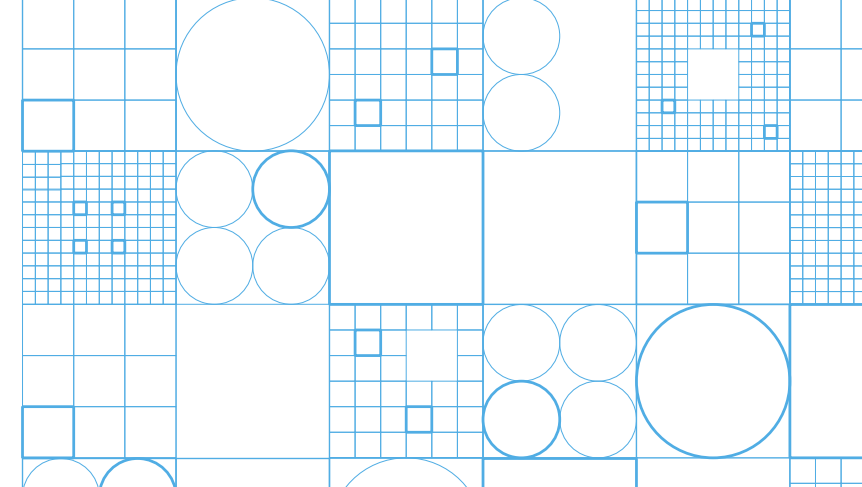
First NHS organisation to adopt Microsoft's Azure cloud and Office 365 in 2016 delivering agility and capabilities to the organisation to empower the organisation from research to front line services.



ReStart and Interoperability

How SLaM works with ReStart:

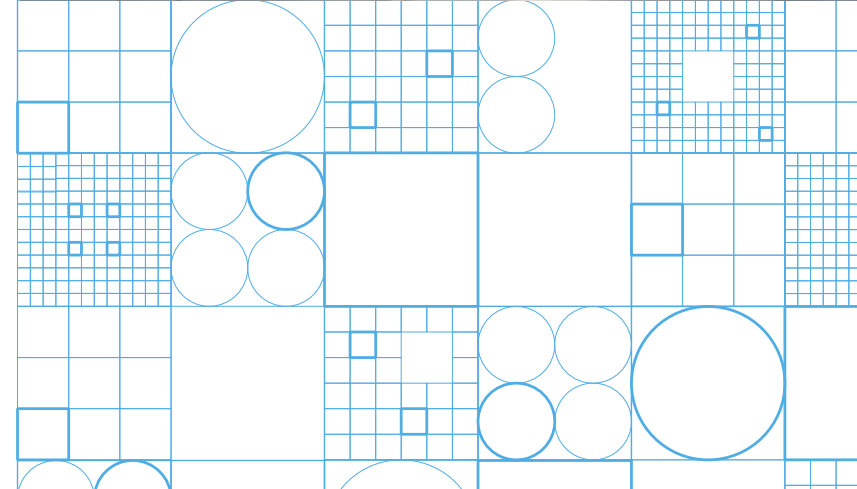
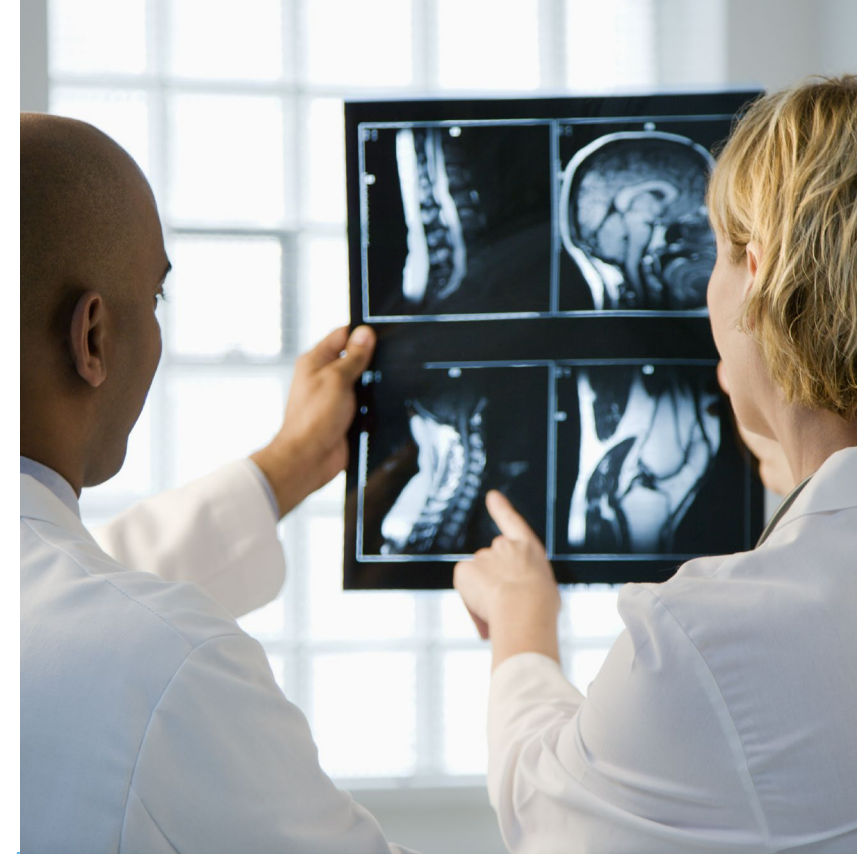
- Integration and Trusted Integration Engine
- Service agreement with ReStart which supports the TIE
- Ensuring that essential services are remotely monitored 24 x 7
- Interoperability within the Trust (ICS) is supported by the TIE facilitating a smooth, accurate, real-time transfer of data across certain clinical pathways.



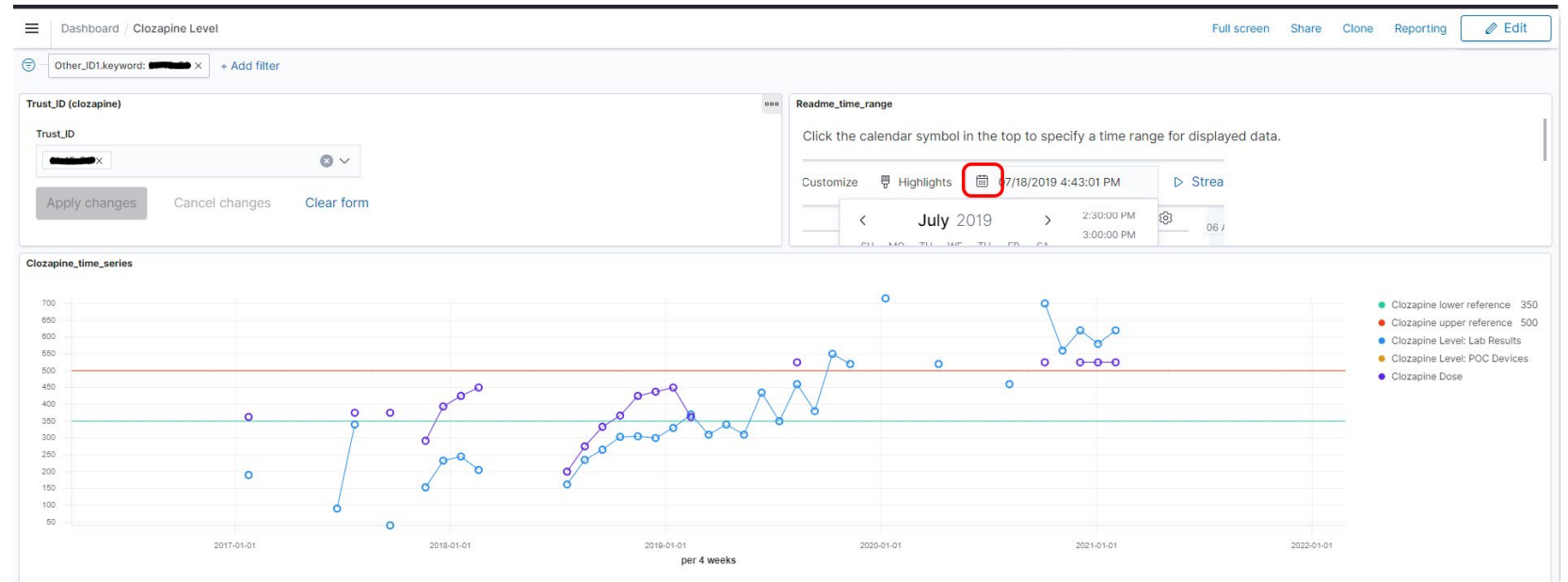
World First!!

New Point of Care Devices

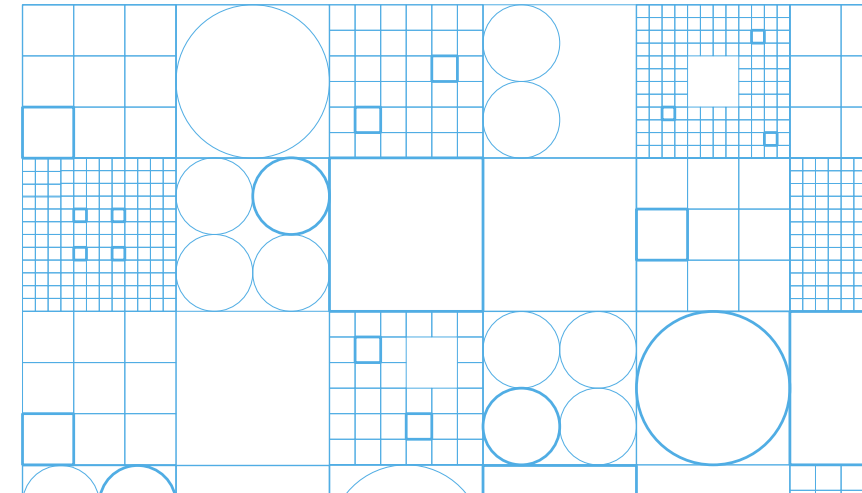
- A great use case for SLaM's TIE
- TIE is used within an area of primary research – Front line services providing near real-time dosing levels of a medication known as clozapine
- This is specific to specific pathways within Mental Health
- Collaboration enabled a new finger prick blood Point of Care test which produces results within 6 min
- Traditional blood testing takes around 5-7 days + appointment for results



MyCare

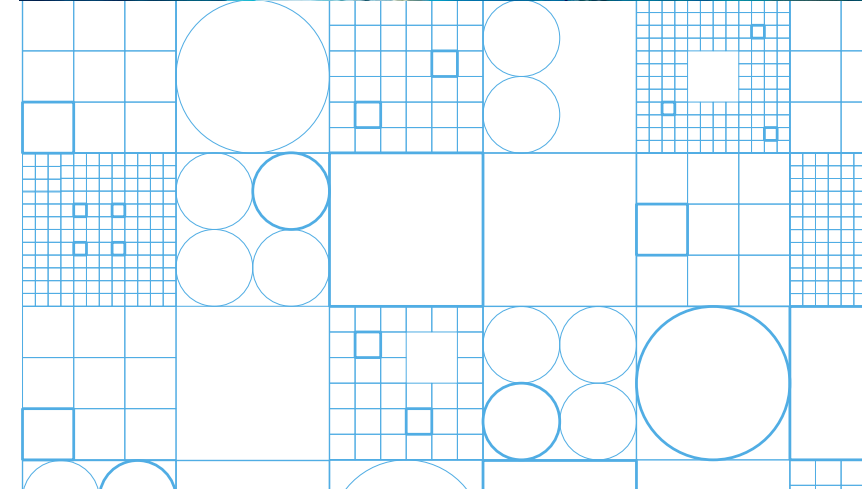


NHS
South London
and Maudsley
NHS Foundation Trust



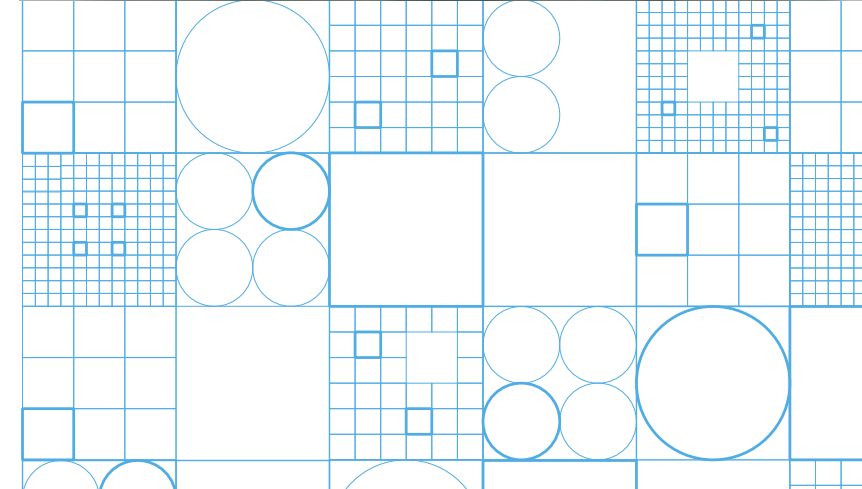
TIE and Point of Care Blood Test

- The TIE is used to integrate data quickly, securely in real-time
- The levels of clozapine vary widely from one patient to another depending on height, weight, age, gender etc.
- The blood levels are fed directly into other systems in the trust.
- This is then displayed in a visual dashboard
- The clinician is able to see whether the patient dosing needs to be adjusted and prescribe accordingly.



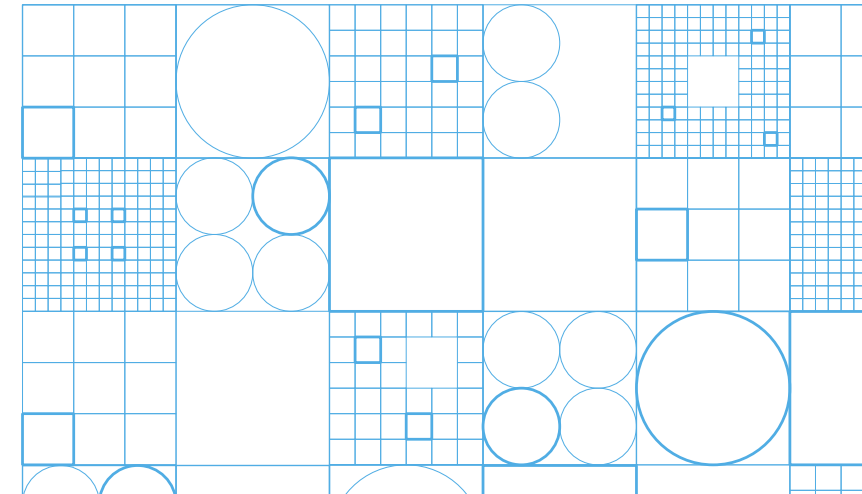
The Results

- Two papers have been published already, with a third under peer review
- The results so far show a far higher engagement of patients due to the less invasive blood test
- Patients take a greater interest in their own dosing level or score, meaning that patients become more empowered
- Patients are established much quicker using the new PoC process, sometimes within 3 weeks compared to 3 months.
- A SLAM patient costs the NHS around £500 a day. Potentially huge resources savings to be made.



Summary – Nik Barnes

- Covered some of the issues regarding Interoperability within the NHS
- Using South London and Maudsley we have demonstrated how using integration and a Trusted User Interface acts as a solid foundation for underpinning interoperability within an ICS
- Covered the 3 x P's – Plan, Platform and Partner
- Mandatory requirement for all ICS's to provide a 5 year plan which includes Data and sharing of data by this December
- ReStart is a partner who has a 20 year reputation across some 50+ customers and who can assist at a number of levels



Finish

Any Questions?

